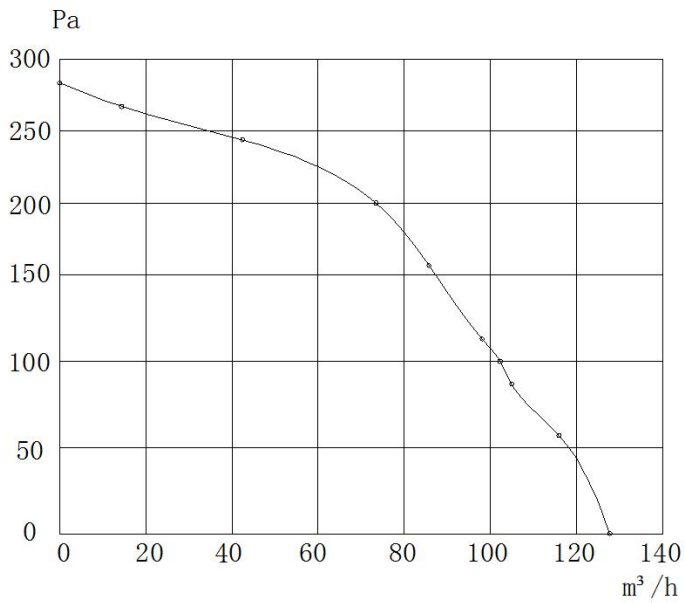


## DC Centrifugal Fan DGF097

风量曲线:

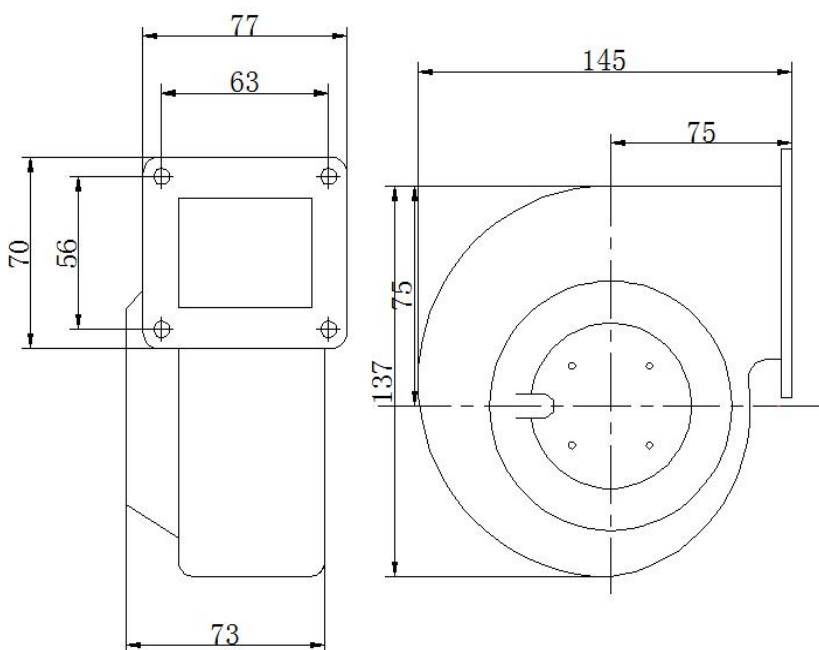


## 技术参数 Specifications

材质 :镀锌钢板 防护等级:IP44 绝缘等级:Class:B

型号 Model	额定电压 Rated Voltage	工作电压 Operating Voltage	额定电流 Rated Current	额定功率 Rated Power	额定转速 Rated Speed	风量 Air Flow	风压 Air pressure	噪音 Noise Level	工作温度 Perm.Amb Temp.	质量 Weight
Part NO.	VDC	VDC	A	W	RPM	M <sup>3</sup> /h	Pa	dBA	°C	Kg
DGF097D2	24	16-28	1.5	36	2500	128	280	60	-25~+60°C	0.6

外形尺寸 Outline

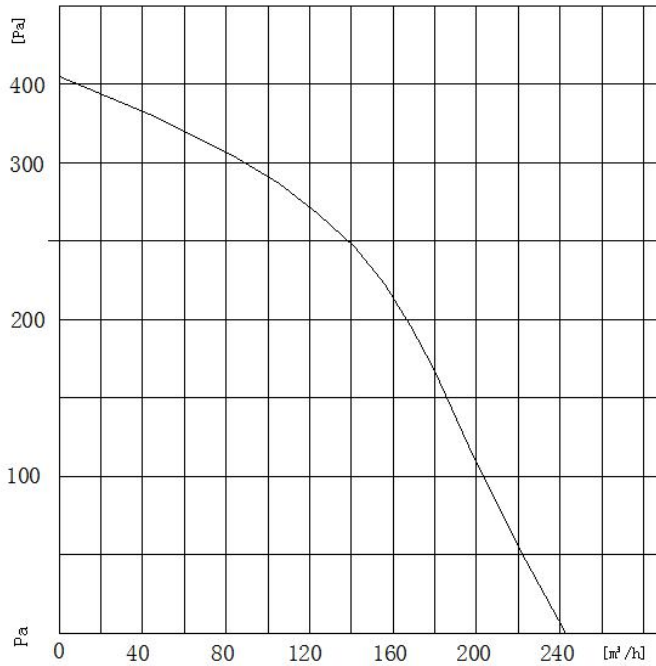


## 控制线 Control Cable

颜色 Color	功能 Function
红 Red	+10V Output
蓝 Blue	GND
黄 Yellow	0-10VDC/ PWM
白 White	FG

# DC Centrifugal Fan DGF108

风量曲线:

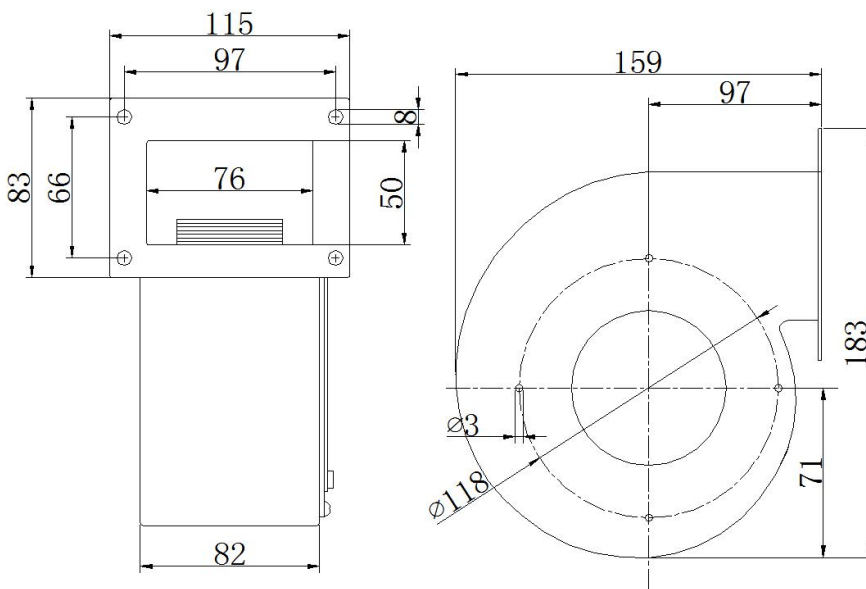


### 技术参数 Specifications

材质 :镀锌钢板 防护等级:IP44 绝缘等级:Calss:B

型号 Model	额定电压 Rated Voltage	工作电压 Operating Voltage	额定电流 Rated Current	额定功率 Rated Power	额定转速 Rated Speed	风量 Air Flow	风压 Air pressure	噪音 Noise Level	工作温度 Perm.Amb. Temp.	质量 Weight
Part NO.	VDC	VDC	A	W	RPM	M³/h	Pa	dBA	°C	Kg
DGF108D2A1	24	16-28	2.2	53	3000	243	355	60	-25~+60°C	1.35
DGF108D4A1	48	36-57	1.1	53	3000	243	355	60	-25~+60°C	1.35

外形尺寸 Outline

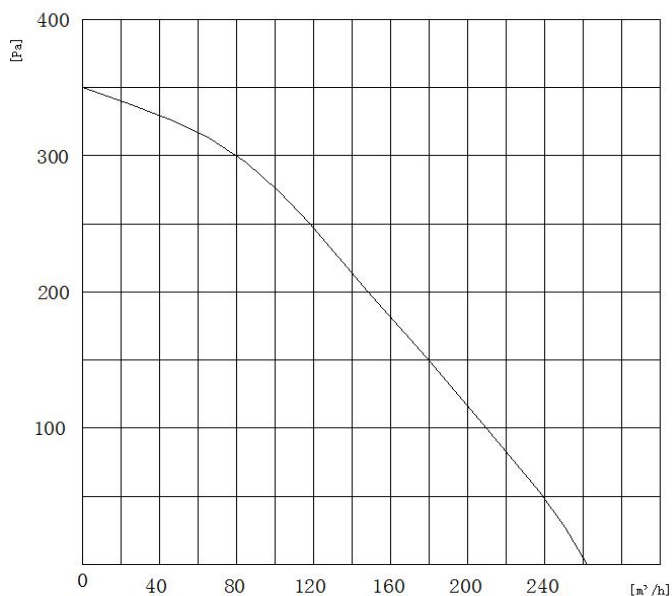


### 控制线 Control Cable

颜色 Color	功能 Function
红 Red	+10V Output
蓝 Blue	GND
黄 Yellow	0-10VDC/ PWM
白 White	FG

## DC Centrifugal Fan DGF120

风量曲线:

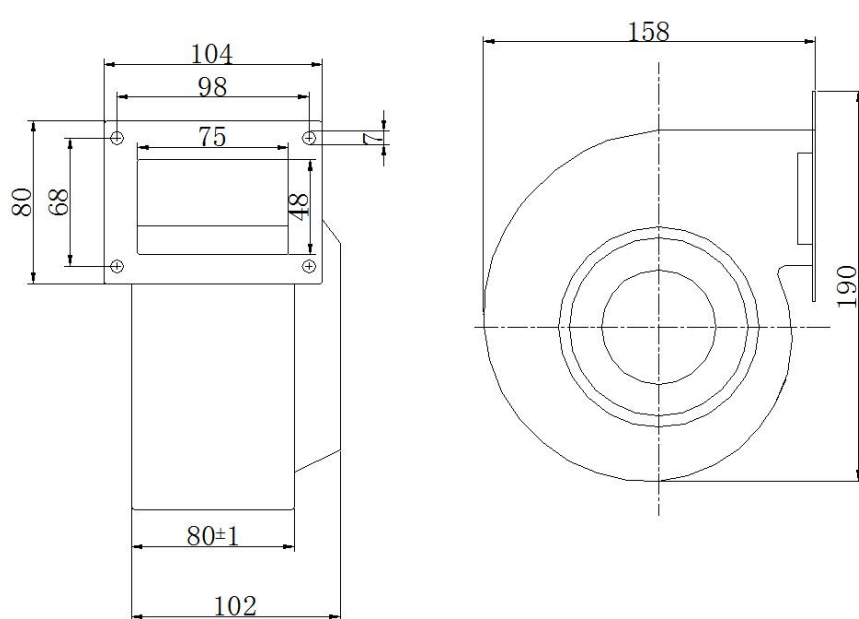


## 技术参数 Specifications

材质 :镀锌钢板 防护等级:IP44 绝缘等级:Calss:B

型号 Model	额定电压 Rated Voltage	工作电压 Operating Voltage	额定电流 Rated Current	额定功率 Rated Power	额定转速 Rated Speed	风量 Air Flow	风压 Air pressure	噪音 Noise Level	工作温度 Perm.Amb. Temp.	质量 Weight
Part NO.	VDC	VDC	A	W	RPM	M³/h	Pa	dBA	°C	Kg
DGF120D2A1	24	16-28	2.4	58	2400	262	350	60	-25~+60°C	1.5
DGF120D4A1	48	36-57	1.2	58	2400	262	350	60	-25~+60°C	1.5

外形尺寸 Outline

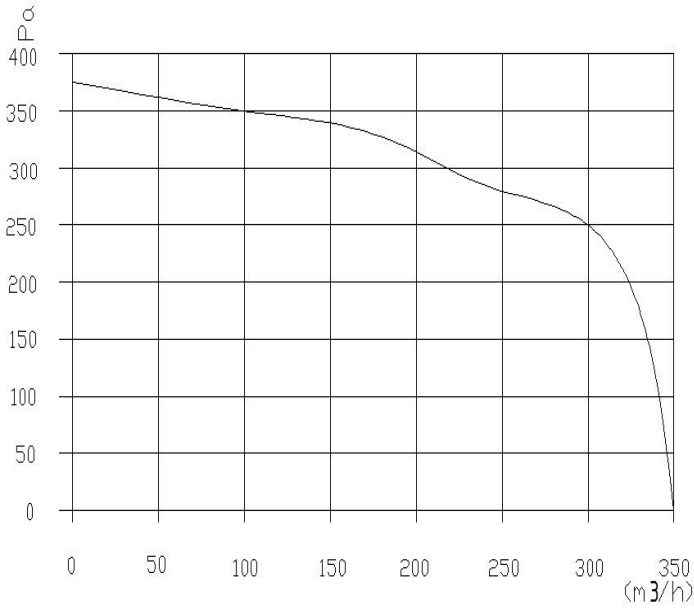


控制线 Control Cable

颜色 Color	功能 Function
红 Red	+10V Output
蓝 Blue	GND
黄 Yellow	0-10VDC/ PWM
白 White	FG

# DC Centrifugal Fan DGF133

风量曲线:

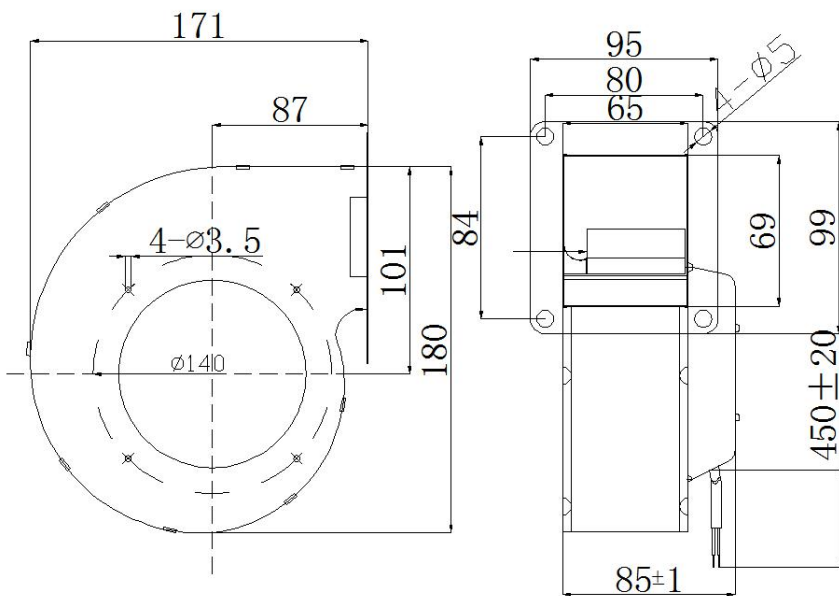


技术参数 Specifications

材质 :镀锌钢板 防护等级:IP44 绝缘等级:Class:B

型号 Model	额定电压 Rated Voltage	工作电压 Operating Voltage	额定电流 Rated Current	额定功率 Rated Power	额定转速 Rated Speed	风量 Air Flow	风压 Air pressure	噪音 Noise Level	工作温度 Perm.Amb. Temp.	质量 Weight
Part NO.	VDC	VDC	A	W	RPM	M <sup>3</sup> /h	Pa	dBA	°C	Kg
DGF133D2A2	24	16-28	3.5	85	2500	350	375	67	-25~+60°C	1.58
DGF133D4A2	48	36-57	1.75	85	2500	350	375	67	-25~+60°C	1.58

外形尺寸 Outline

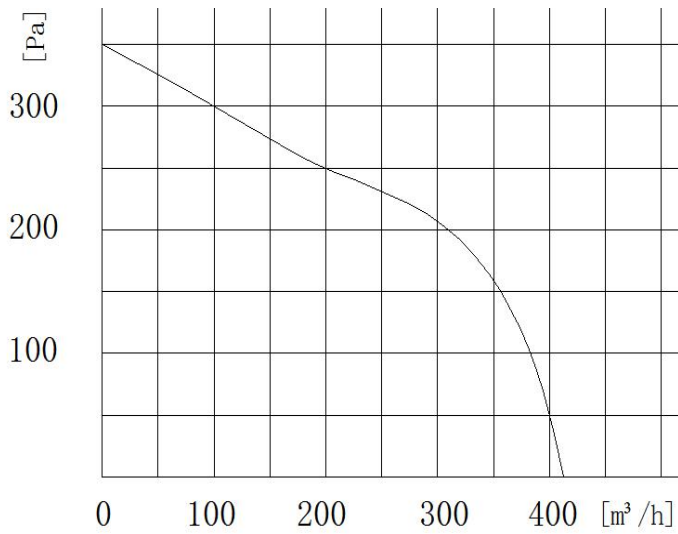


控制线 Control Cable

颜色 Color	功能 Function
红 Red	+10V Output
蓝 Blue	GND
黄 Yellow	0-10VDC/ PWM
白 White	FG

## DC Centrifugal Fan DGF140

风量曲线:

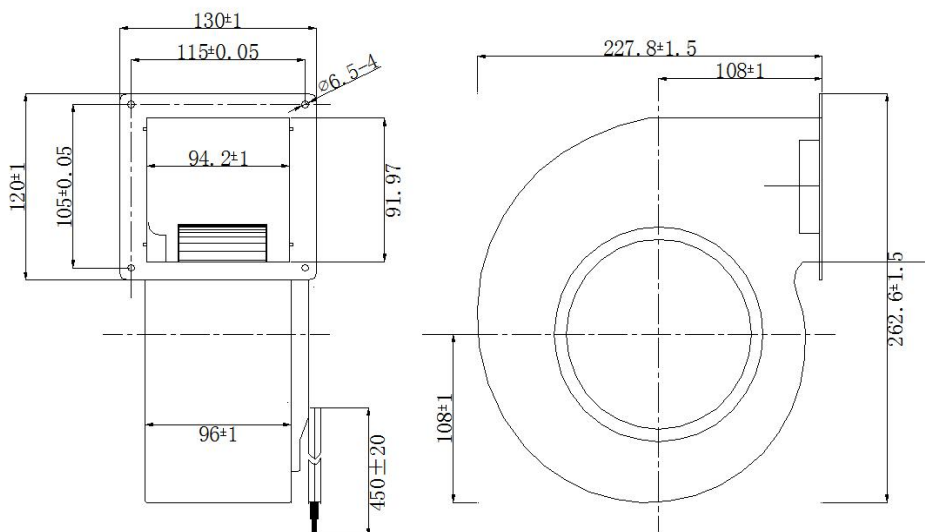


## 技术参数 Specifications

材质 :镀锌钢板 防护等级:IP44 绝缘等级:Class:B

型号 Model	额定电压 Rated Voltage	工作电压 Operating Voltage	额定电流 Rated Current	额定功率 Rated Power	额定转速 Rated Speed	风量 Air Flow	风压 Air pressure	噪音 Noise Level	工作温度 Perm.Amb. Temp.	质量 Weight
Part NO.	VDC	VDC	A	W	RPM	M <sup>3</sup> /h	Pa	dBA	°C	Kg
DGF140D2A2	24	16-28	3.2	77	1800	410	350	64	-25~+60°C	1.8
DGF140D4A2	48	36-57	1.6	77	1800	410	350	64	-25~+60°C	1.8

外形尺寸 Outline

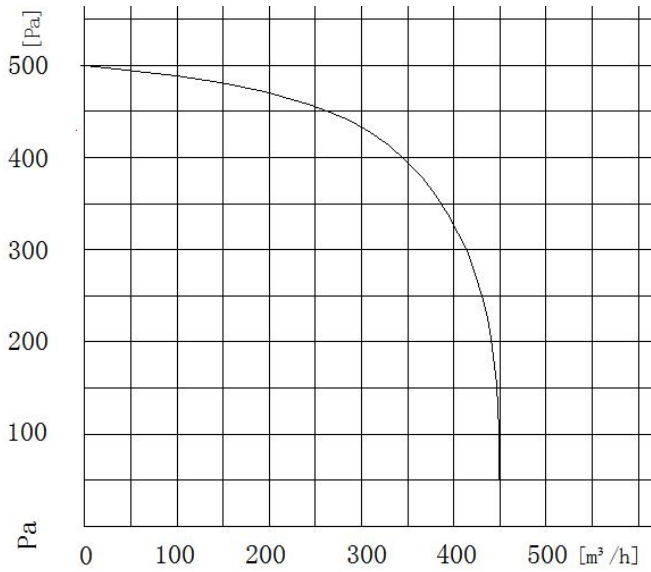


控制线 Control Cable

颜色 Color	功能 Function
红 Red	+10V Output
蓝 Blue	GND
黄 Yellow	0-10VDC/ PWM
白 White	FG

# DC Centrifugal Fan DGF140

风量曲线:

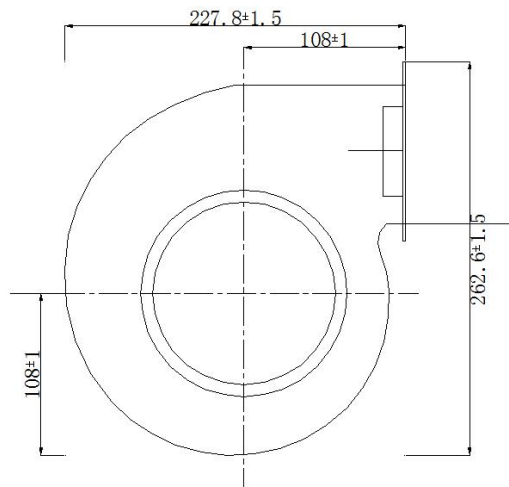
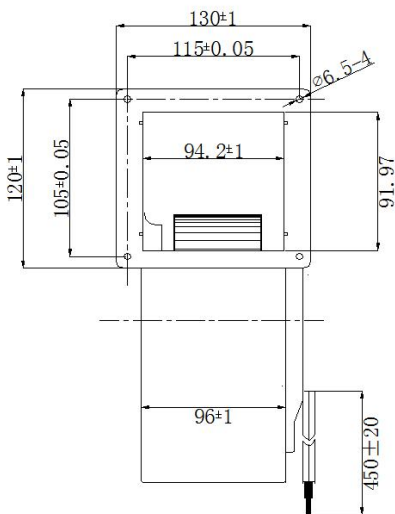


技术参数 Specifications

材质 :镀锌钢板 防护等级:IP44 绝缘等级:Calss:B

型号 Model	额定电压 Rated Voltage	工作电压 Operating Voltage	额定电流 Rated Current	额定功率 Rated Power	额定转速 Rated Speed	风量 Air Flow	风压 Air pressure	噪音 Noise Level	工作温度 Perm.Amb. Temp.	质量 Weight
Part NO.	VDC	VDC	A	W	RPM	M³ /h	Pa	dBA	°C	Kg
DGF140D2B1	24	16-28	5	120	2200	450	500	67	-25~+60°C	2.5
DGF140D4B1	48	36-57	2.5	120	2200	450	500	67	-25~+60°C	2.5

外形尺寸 Outline



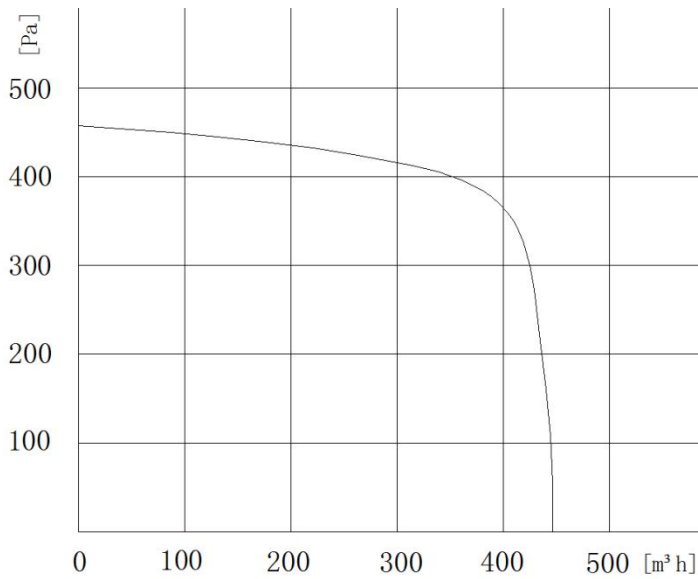
控制线 Control Cable

颜色 Color	功能 Function
红 Red	+10V Output
蓝 Blue	GND
黄 Yellow	0-10VDC/ PWM
白 White	FG



# DC Centrifugal Fan DGF160

风量曲线:

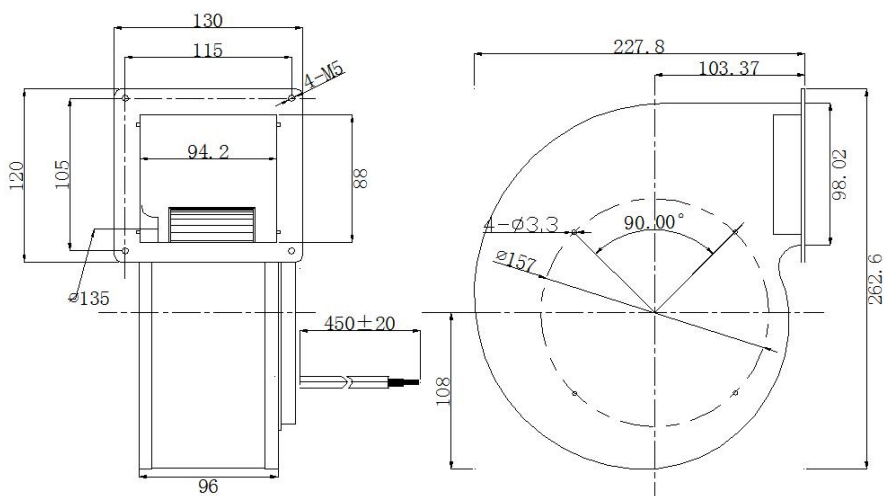


### 技术参数 Specifications

材质 :镀锌钢板 防护等级:IP44 绝缘等级:Class:B

型号 Model	额定电压 Rated Voltage	工作电压 Operating Voltage	额定电流 Rated Current	额定功率 Rated Power	额定转速 Rated Speed	风量 Air Flow	风压 Air pressure	噪音 Noise Level	工作温度 Perm.Amb. Temp.	质量 Weight
Part NO.	VDC	VDC	A	W	RPM	M³ /h	Pa	dBA	°C	Kg
DGF160D2B1	24	16-28	4.2	100	1750	450	450	67	-25~+60°C	2.6
DGF160D4B1	48	36-57	2.1	100	1750	450	450	67	-25~+60°C	2.6

外形尺寸 Outline

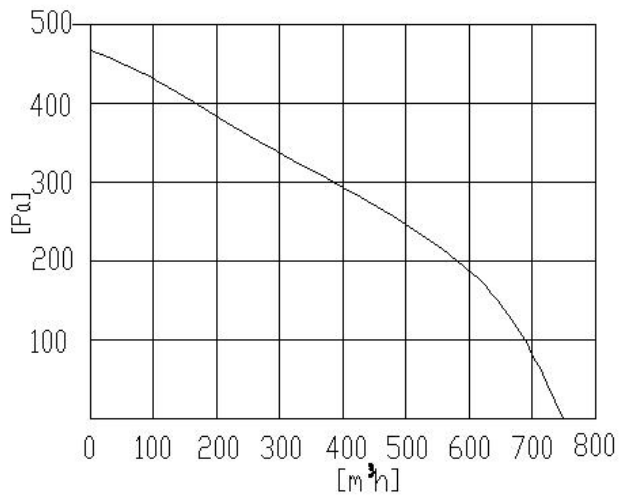


### 控制线 Control Cable

颜色 Color	功能 Function
红 Red	+10V Output
蓝 Blue	GND
黄 Yellow	0-10VDC/ PWM
白 White	FG

# DC Centrifugal Fan SGF-133-190

风量曲线:

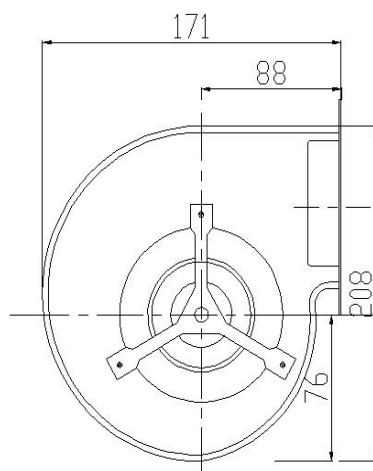
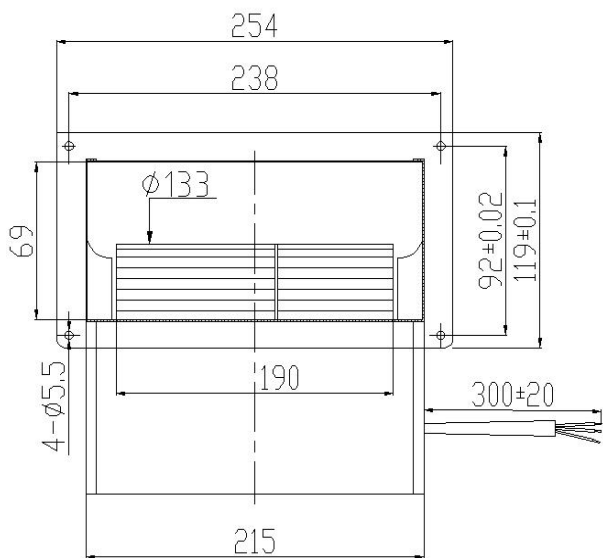


### 技术参数 Specifications

材质 :镀锌钢板 防护等级:IP44 绝缘等级:Calss:B

型号 Model	额定电压 Rated Voltage	工作电压 Operating Voltage	额定电流 Rated Current	额定功率 Rated Power	额定转速 Rated Speed	风量 Air Flow	风压 Air pressure	噪音 Noise Level	工作温度 Perm.Amb. Temp.	质量 Weight
Part NO.	VDC	VDC	A	W	RPM	M³/h	Pa	dBA	°C	Kg
SGF133/190D2B2	24	16~28	6.6	158	1750	750	488	62	-25~+60°C	3.3
SGF133/190D4B2	48	36~56	3.3	158	1750	750	488	62	-25~+60°C	3.3

### 外形尺寸 Outline



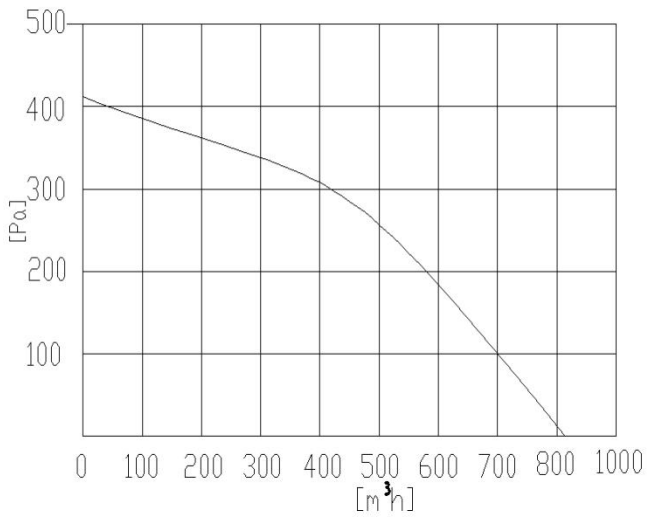
### 控制线 Control Cable

颜色 Color	功能 Function
红 Red	+10V Output
蓝 Blue	GND
黄 Yellow	0-10VDC/ PWM
白 White	FG



## DC Centrifugal Fan SGF-146-190

风量曲线:

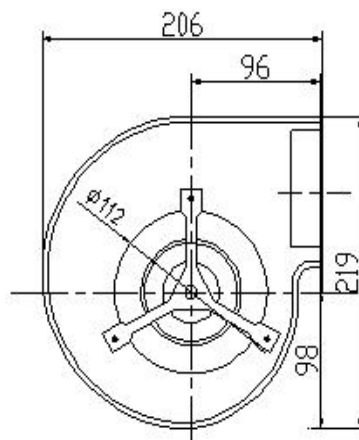
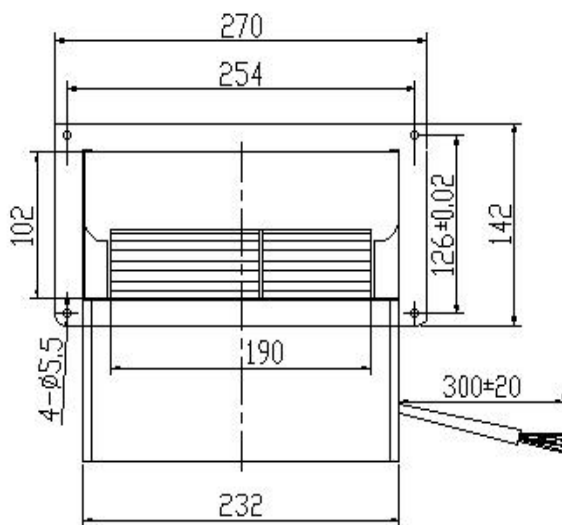


### 技术参数 Specifications

材质 :镀锌钢板 防护等级:IP44 绝缘等级:Class:B

型号 Model	额定电压 Rated Voltage	工作电压 Operating Voltage	额定电流 Rated Current	额定功率 Rated Power	额定转速 Rated Speed	风量 Air Flow	风压 Air pressure	噪音 Noise Level	工作温度 Perm.Amb. Temp.	质量 Weight
Part NO.	VDC	VDC	A	W	RPM	M <sup>3</sup> /h	Pa	dB(A)	°C	Kg
SGF146/190D2B2	24	16~28	6.4	153	1580	810	410	61	-25~+60°C	3.4
SGF146/190D4B2	48	36~56	3.2	153	1580	810	410	61	-25~+60°C	3.4

外形尺寸 Outline



### 控制线 Control Cable

颜色 Color	功能 Function
红 Red	+10V Output
蓝 Blue	GND
黄 Yellow	0-10VDC/ PWM
白 White	FG