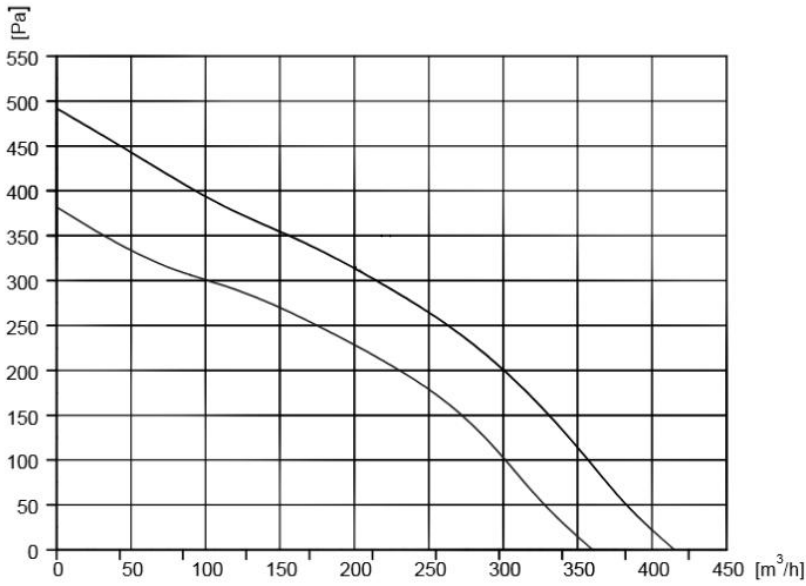


DC Centrifugal Fan $\phi 133$

风量曲线:

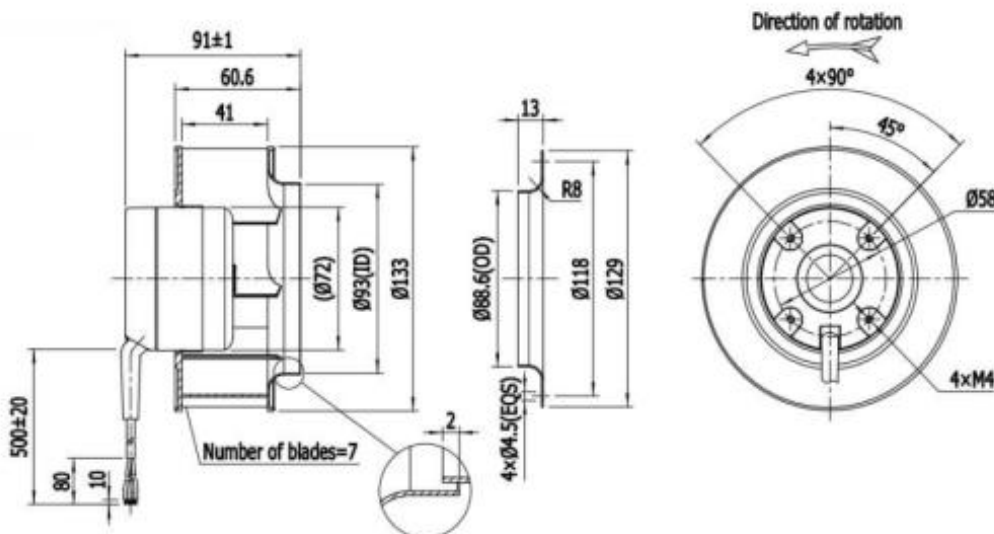


技术参数 Specifications

材质:PA6+GF 防护等级:IP44 绝缘等级:Class:B

型号 Model	额定电压 Rated Voltage	工作电压 Operating Voltage	额定电流 Rated Current	额定功率 Rated Power	额定转速 Rated Speed	风量 Air Flow	风压 Air pressure	噪音 Noise Level	工作温度 Perm.Amb. Temp.	质量 Weight
Part NO.	VDC	VDC	A	W	RPM	M ³ /h	Pa	dBA	°C	Kg
HF133/41D2A1	24	16~28	1.4	33.6	3900	382	382	63	-25~+60°C	0.74
HF133/41D4A1	48	36~56	0.7	33.6	3900	382	382	63	-25~+60°C	0.74
HF133/41D2A2	24	16~28	2.1	50.4	4500	409	492	74	-25~+60°C	0.74
HF133/41D4A2	48	36~56	1.05	50.4	4500	409	492	74	-25~+60°C	0.74

外形尺寸 Outline

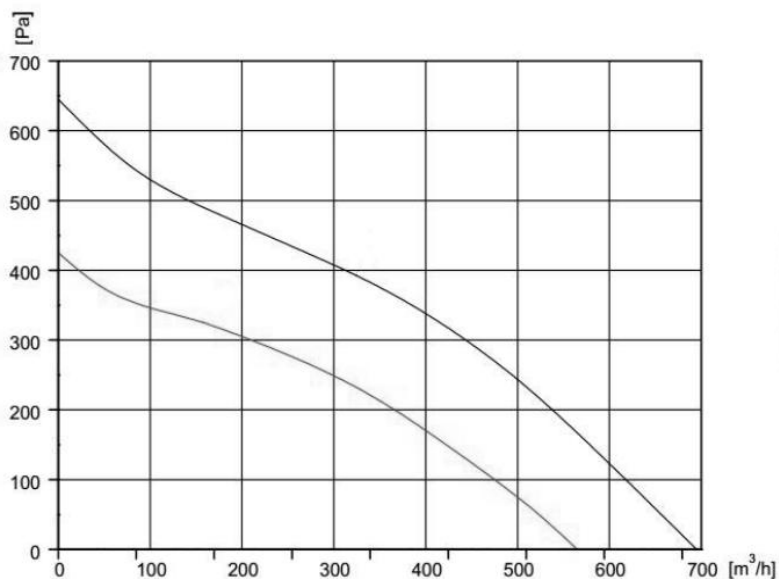


控制线 Control Cable

颜色 Color	功能 Function
红 Red	+10V Output
蓝 Blue	GND
黄 Yellow	0-10VDC/ PWM
白 White	FG

DC Centrifugal Fan $\phi 175$

风量曲线:

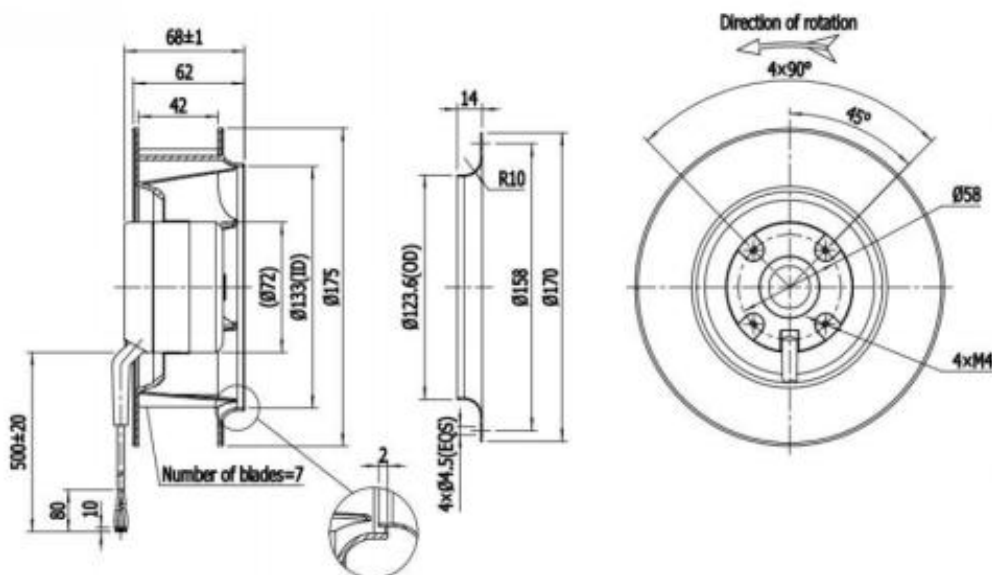


技术参数 Specifications

材质:PA6+GF 防护等级:IP44 绝缘等级:Calss:B

型号 Model	额定电压 Rated Voltage	工作电压 Operating Voltage	额定电流 Rated Current	额定功率 Rated Power	额定转速 Rated Speed	风量 Air Flow	风压 Air pressure	噪音 Noise Level	工作温度 Perm.Amb. Temp.	质量 Weight
Part NO.	VDC	VDC	A	W	RPM	M ³ /h	Pa	dBA	°C	Kg
HF175/42D2A1	24	16~28	0.75	36	3100	565	637	65	-25~+60°C	0.78
HF175/42D4A1	48	36~56	0.75	36	3100	565	637	65	-25~+60°C	0.78
HF175/42D2A2	24	16~28	3.0	72	3900	637	402	72	-25~+60°C	0.78
HF175/42D4A2	48	36~56	1.5	72	3900	637	402	72	-25~+60°C	0.78

外形尺寸 Outline

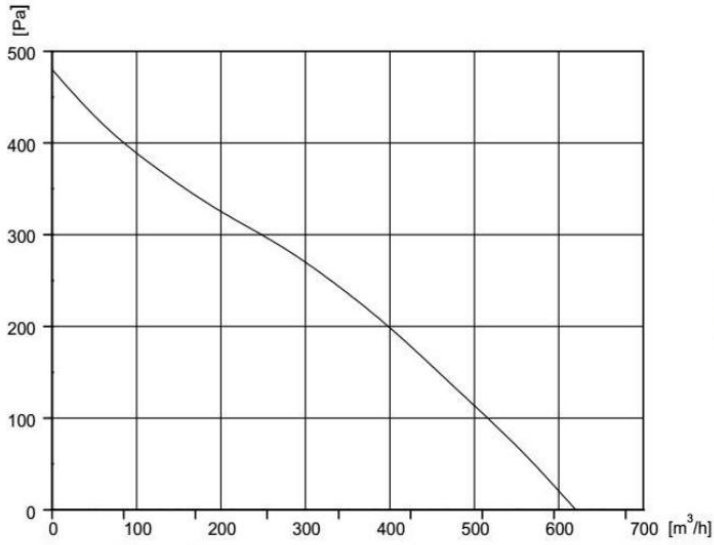


控制线 Control Cable

颜色 Color	功能 Function
红 Red	+10V Output
蓝 Blue	GND
黄 Yellow	0-10VDC/ PWM
白 White	FG

DC Centrifugal Fan $\phi 190$

风量曲线:

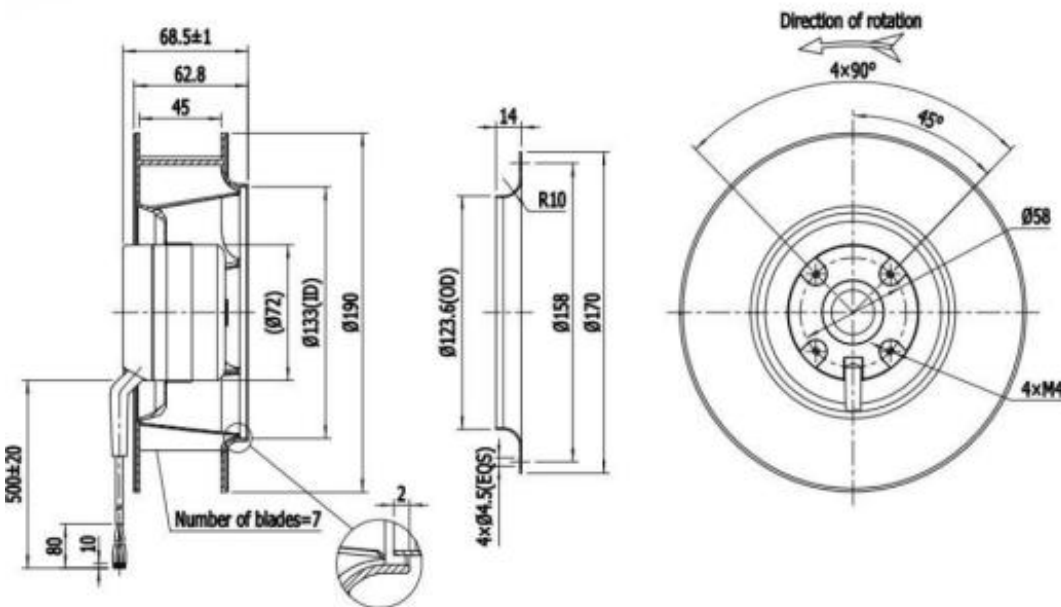


技术参数 Specifications

材质:PA6+GF 防护等级:IP44 绝缘等级:Calss:B

型号 Model	额定电压 Rated Voltage	工作电压 Operating Voltage	额定电流 Rated Current	额定功率 Rated Power	额定转速 Rated Speed	风量 Air Flow	风压 Air pressure	噪音 Noise Level	工作温度 Perm.Amb. Temp.	质量 Weight
Part NO.	VDC	VDC	A	W	RPM	M ³ /h	Pa	dBA	°C	Kg
HF190/45D2A1	24	16~28	2.5	60	2950	620	473	68	-25~+60°C	1.0
HF190/45D4A1	48	36~56	1.25	60	2950	620	473	68	-25~+60°C	1.0

外形尺寸 Outline

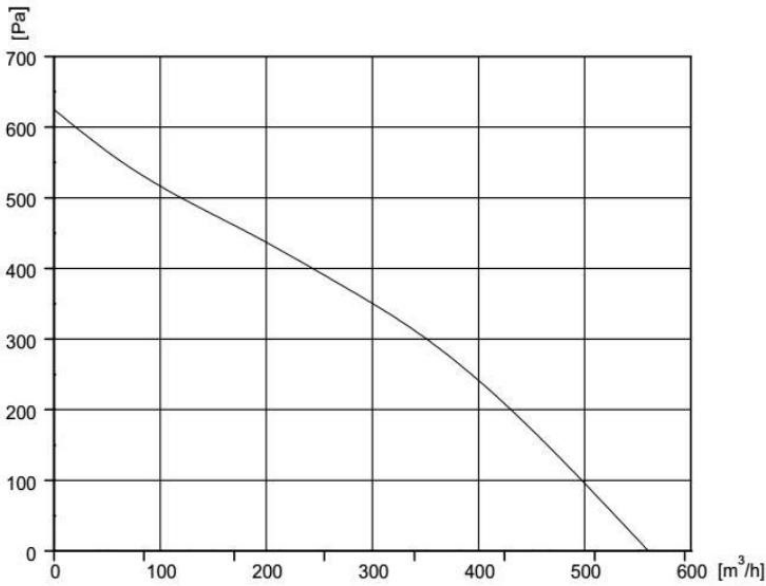


控制线 Control Cable

颜色 Color	功能 Function
红 Red	+10V Output
蓝 Blue	GND
黄 Yellow	0-10VDC/ PWM
白 White	FG

DC Centrifugal Fan $\phi 190$

风量曲线:

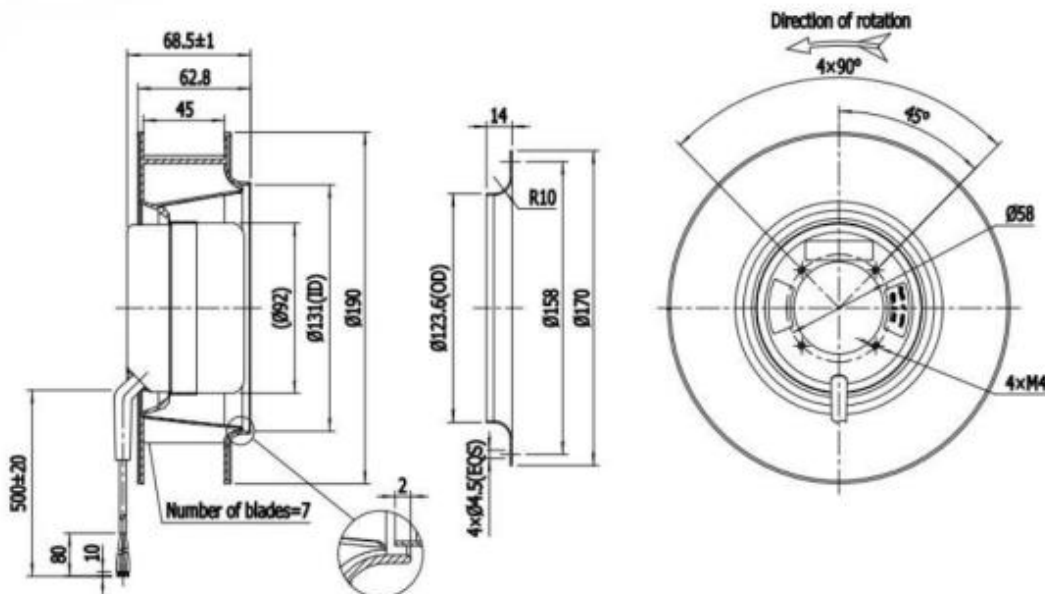


技术参数 Specifications

材质:PA6+GF 防护等级:IP44 绝缘等级:Class:B

型号 Model	额定电压 Rated Voltage	工作电压 Operating Voltage	额定电流 Rated Current	额定功率 Rated Power	额定转速 Rated Speed	风量 Air Flow	风压 Air pressure	噪音 Noise Level	工作温度 Perm.Amb. Temp.	质量 Weight
Part NO.	VDC	VDC	A	W	RPM	M ³ /h	Pa	dBA	°C	Kg
HF190/45D2B1	24	16~28	3.2	76.8	3200	560	627	68	-25~+60°C	1.37
HF190/45D4B1	48	36~56	1.6	76.8	3200	560	627	68	-25~+60°C	1.37

外形尺寸 Outline

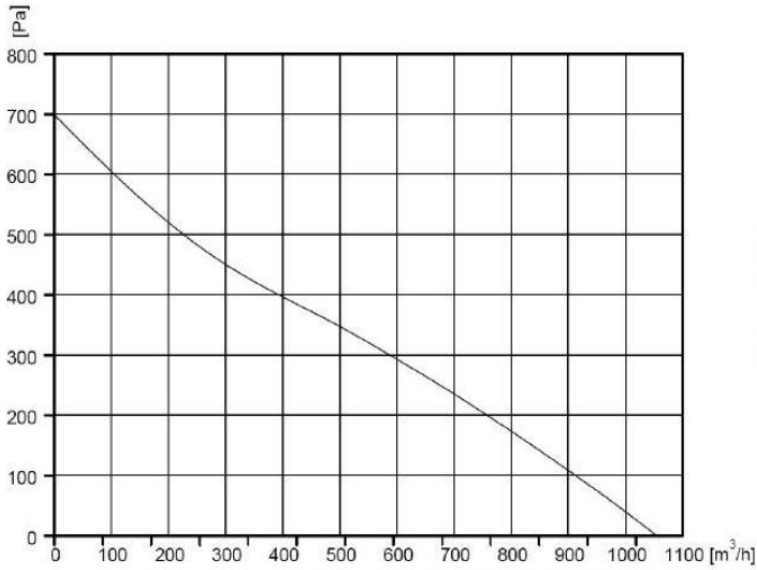


控制线 Control Cable

颜色 Color	功能 Function
红 Red	+10V Output
蓝 Blue	GND
黄 Yellow	0-10VDC/ PWM
白 White	FG

DC Centrifugal Fan $\phi 220$

风量曲线:

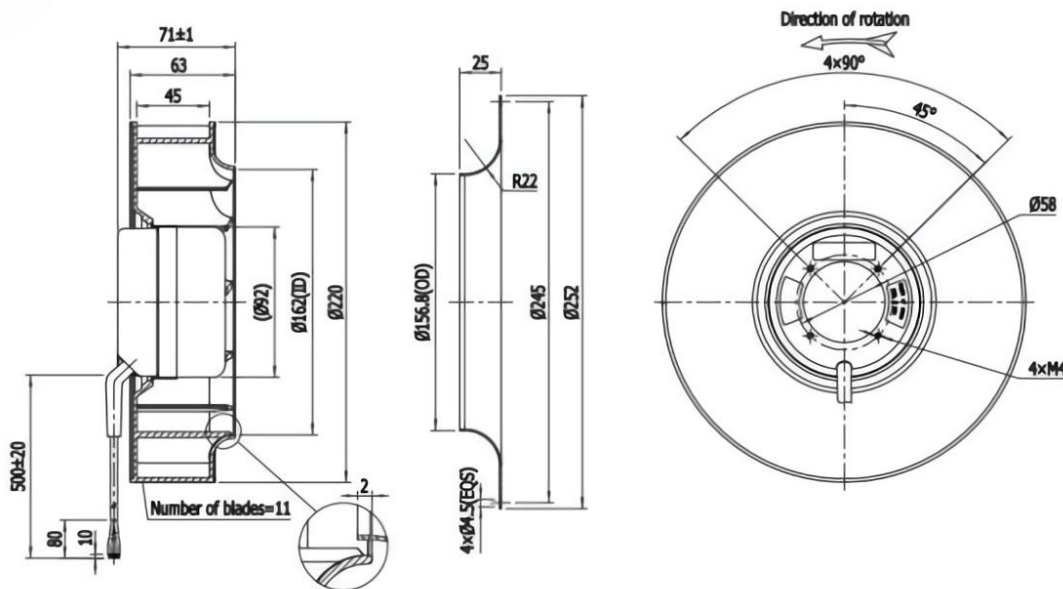


技术参数 Specifications

材质:PA6+GF 防护等级:IP44 绝缘等级:Calss:B

型号 Model	额定电压 Rated Voltage	工作电压 Operating Voltage	额定电流 Rated Current	额定功率 Rated Power	额定转速 Rated Speed	风量 Air Flow	风压 Air pressure	噪音 Noise Level	工作温度 Perm.Amb. Temp.	质量 Weight
Part NO.	VDC	VDC	A	W	RPM	M³/h	Pa	dBA	°C	Kg
HF220/45D2B1	24	16~28	4.6	110	3100	1040	699	76	-25~+60	1.35
HF220/45D4B1	48	36~56	2.3	110	3100	1040	699	76	-25~+60	1.35

外形尺寸 Outline

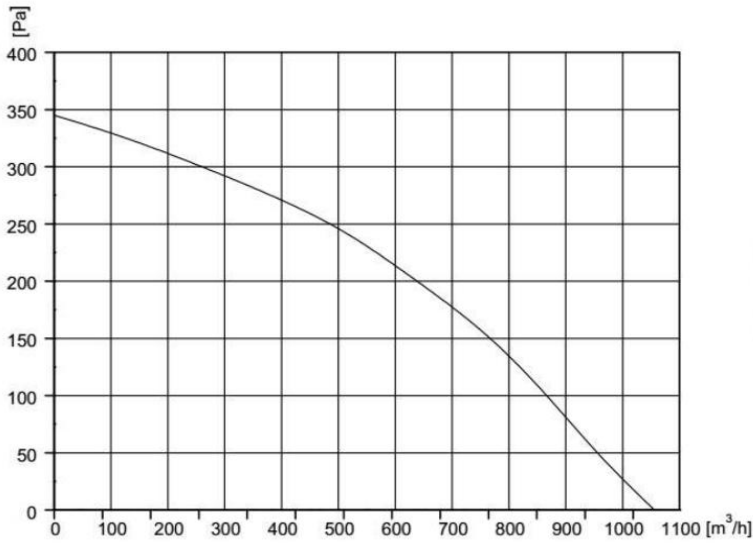


控制线 Control Cable

颜色 Color	功能 Function
红 Red	+10V Output
蓝 Blue	GND
黄 Yellow	0-10VDC/ PWM
白 White	FG

DC Centrifugal Fan $\phi 225$

风量曲线:

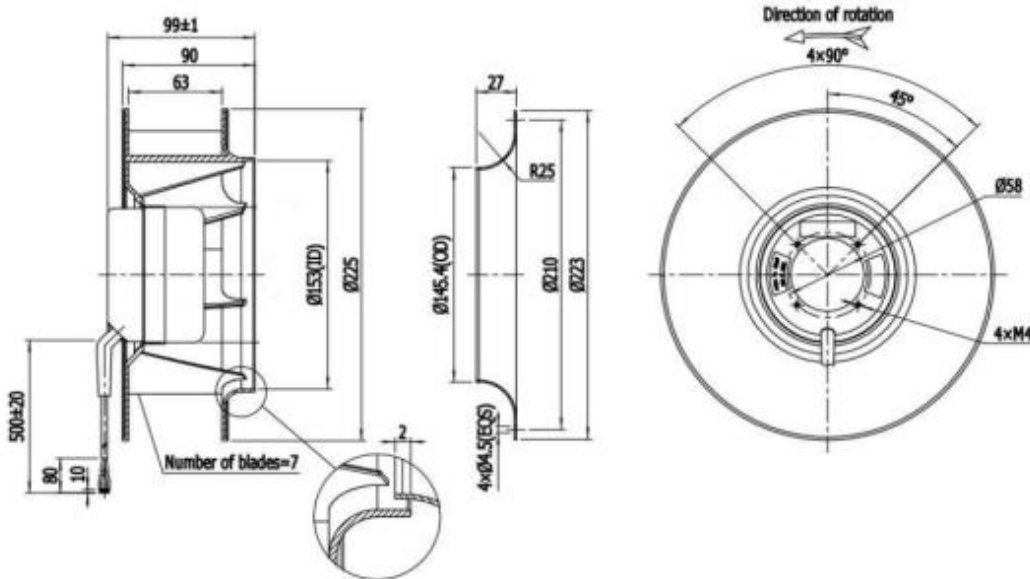


技术参数 Specifications

材质:PA6+GF 防护等级:IP44 绝缘等级:Class:B

型号 Model	额定电压 Rated Voltage	工作电压 Operating Voltage	额定电流 Rated Current	额定功率 Rated Power	额定转速 Rated Speed	风量 Air Flow	风压 Air pressure	噪音 Noise Level	工作温度 Perm.Amb. Temp.	质量 Weight
Part NO.	VDC	VDC	A	W	RPM	M³ /h	Pa	dBA	°C	Kg
HF225/63D2A2	24	16~28	2.5	60	2200	1065	347	65	-20~+60°C	1.35
HF225/63D4A2	48	36~56	1.25	60	2200	1065	347	65	-20~+60°C	1.35

外形尺寸 Outline

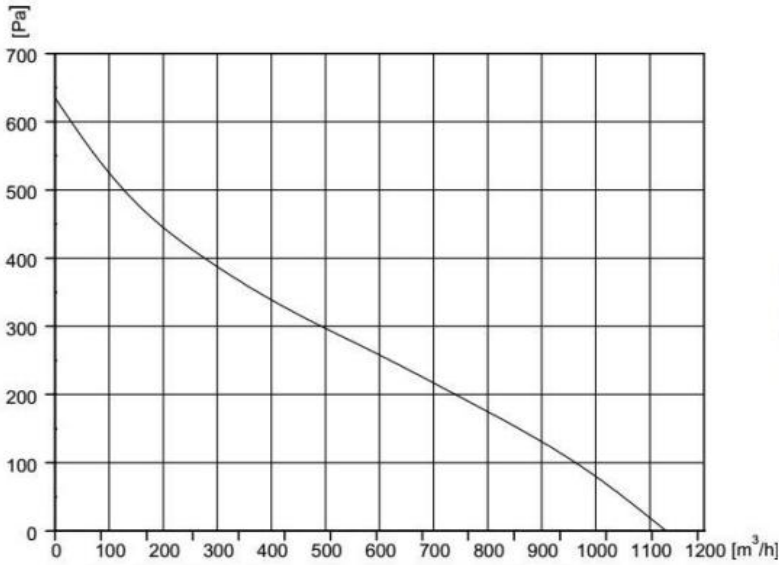


控制线 Control Cable

颜色 Color	功能 Function
红 Red	+10V Output
蓝 Blue	GND
黄 Yellow	0-10VDC/ PWM
白 White	FG

DC Centrifugal Fan $\phi 225$

风量曲线:

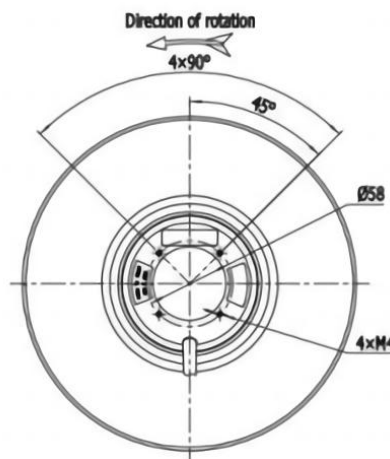
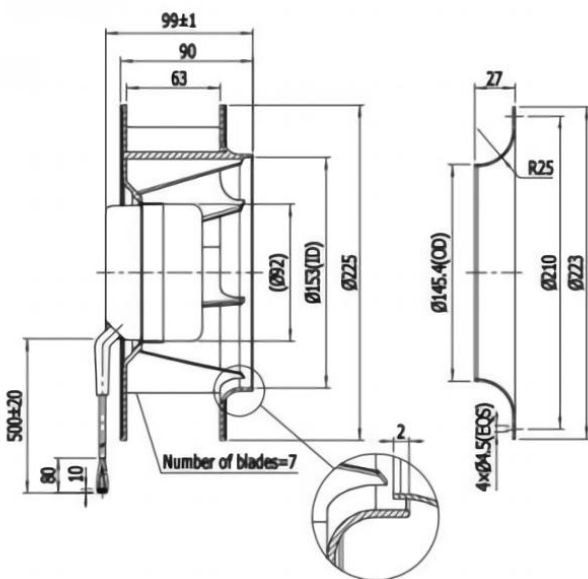


技术参数 Specifications

材质:PA6+GF 防护等级:IP44 绝缘等级:Class:B

型号 Model	额定电压 Rated Voltage	工作电压 Operating Voltage	额定电流 Rated Current	额定功率 Rated Power	额定转速 Rated Speed	风量 Air Flow	风压 Air pressure	噪音 Noise Level	工作温度 Perm.Amb. Temp.	质量 Weight
Part NO.	VDC	VDC	A	W	RPM	M³/h	Pa	dBA	°C	Kg
HF225/63D2B1	24	16~28	4.6	110	2700	1130	635	72	-20~+60°C	1.4
HF225/63D4B1	48	36~56	2.3	110	2700	1130	635	72	-20~+60°C	1.4

外形尺寸 Outline

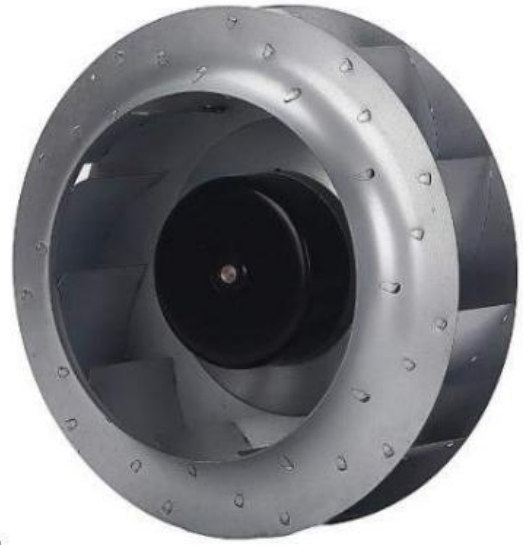
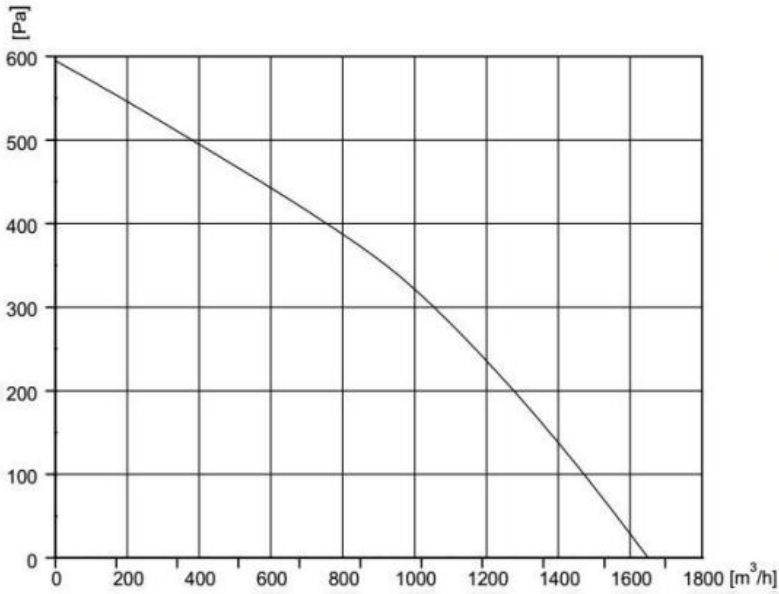


控制线 Control Cable

颜色 Color	功能 Function
红 Red	+10V Output
蓝 Blue	GND
黄 Yellow	0-10VDC/ PWM
白 White	FG

DC Centrifugal Fan $\phi 250$

风量曲线:

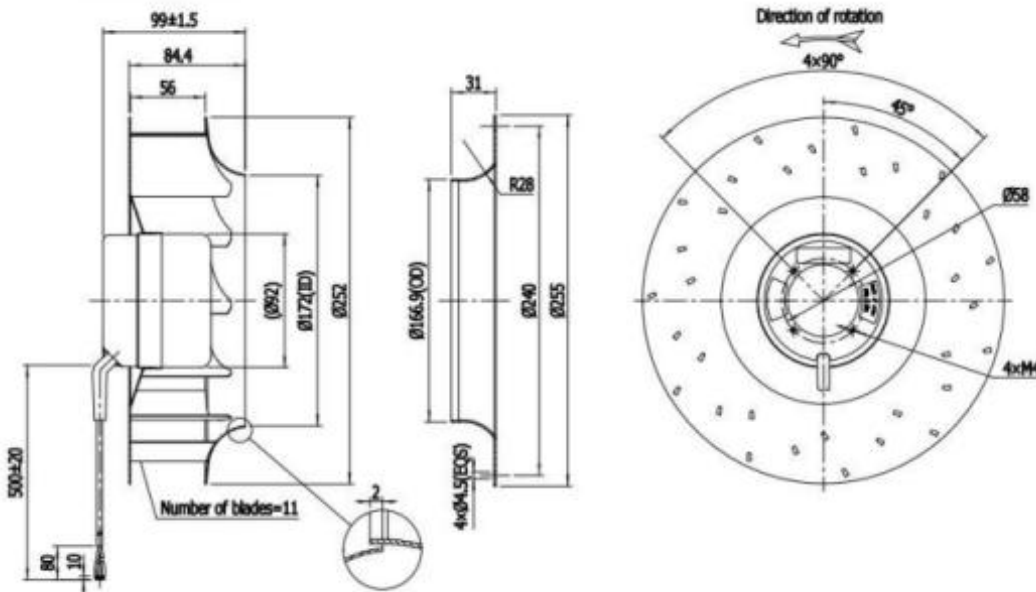


技术参数 Specifications

材质:镀锌钢板 防护等级:IP44 绝缘等级:Class:B

型号 Model	额定电压 Rated Voltage	工作电压 Operating Voltage	额定电流 Rated Current	额定功率 Rated Power	额定转速 Rated Speed	风量 Air Flow	风压 Air pressure	噪音 Noise Level	工作温度 Perm.Amb. Temp.	质量 Weight
Part NO.	VDC	VDC	A	W	RPM	M³/h	Pa	dBA	°C	Kg
HF250/56D2B2	24	16~28	6.8	163	2670	1650	595	72	-20~+60°C	2.3
HF225/56D4B2	48	36~56	3.4	163	2670	1650	595	72	-20~+60°C	2.3

外形尺寸 Outline

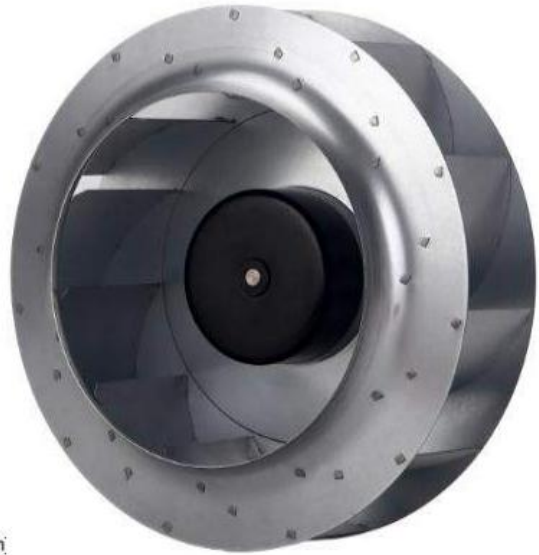
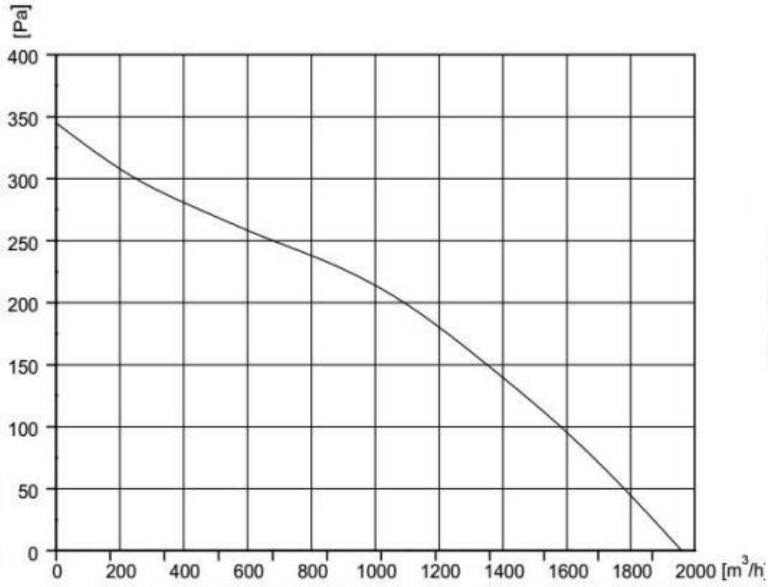


控制线 Control Cable

颜色 Color	功能 Function
红 Red	+10V Output
蓝 Blue	GND
黄 Yellow	0-10VDC/ PWM
白 White	FG

DC Centrifugal Fan $\phi 280$

风量曲线:

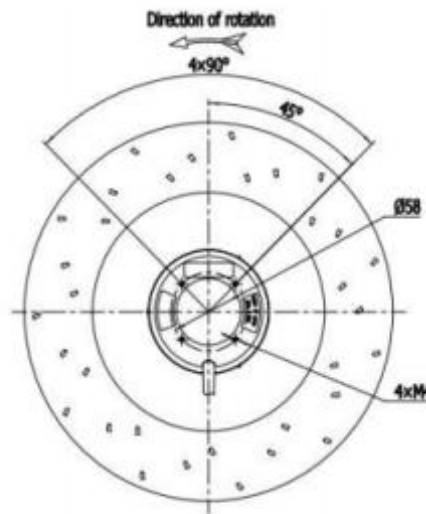
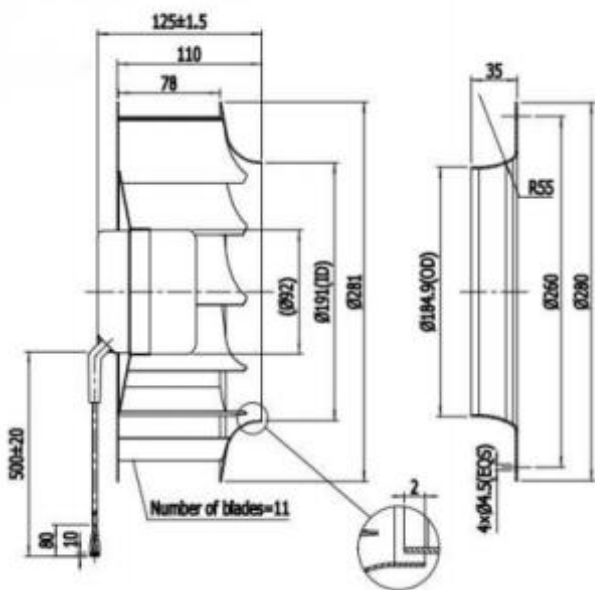


技术参数 Specifications

材质:镀锌钢板 防护等级:IP44 绝缘等级:Class:B

型号 Model	额定电压 Rated Voltage	工作电压 Operating Voltage	额定电流 Rated Current	额定功率 Rated Power	额定转速 Rated Speed	风量 Air Flow	风压 Air pressure	噪音 Noise Level	工作温度 Perm.Amb. Temp.	质量 Weight
Part NO.	VDC	VDC	A	W	RPM	M³/h	Pa	dBA	°C	Kg
HF280/80D2B2	24	16~28	1.8	88	1700	1960	347	71	-20~+60°C	2.8
HF280/80D4B2	48	36~56	3.6	88	1700	1960	347	71	-20~+60°C	2.8

外形尺寸 Outline

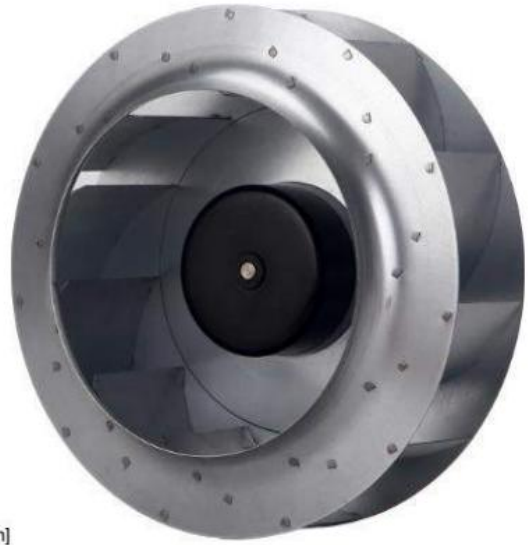
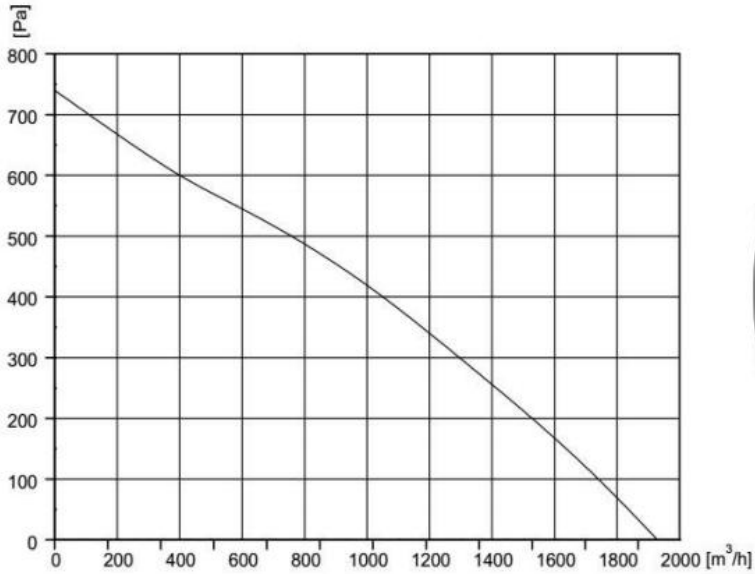


控制线 Control Cable

颜色 Color	功能 Function
红 Red	+10V Output
蓝 Blue	GND
黄 Yellow	0-10VDC/ PWM
白 White	FG

DC Centrifugal Fan $\phi 280$

风量曲线:

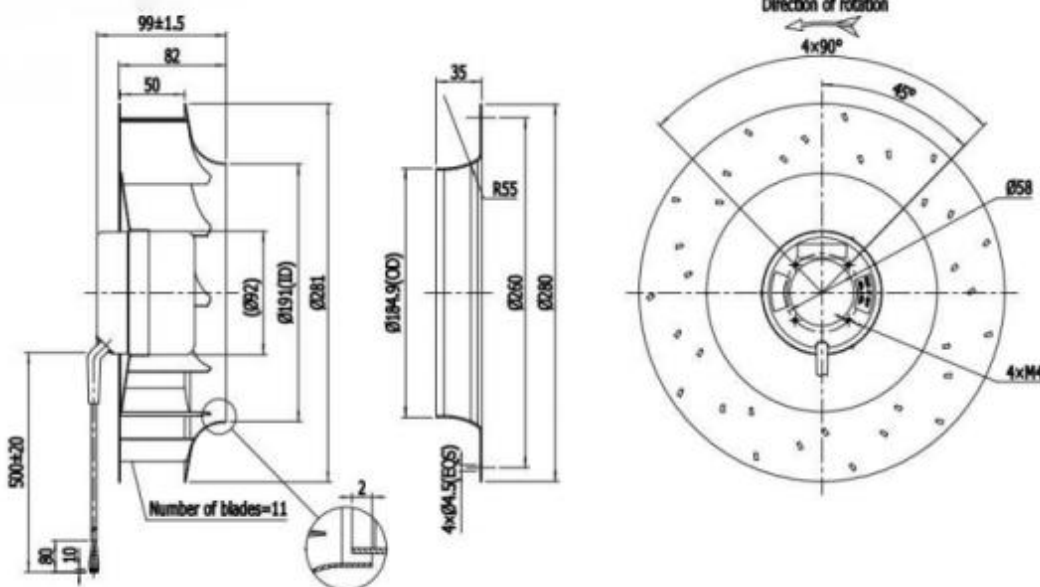


技术参数 Specifications

材质 :镀锌钢板 防护等级:IP44 绝缘等级:Calss:B

型号 Model	额定电压 Rated Voltage	工作电压 Operating Voltage	额定电流 Rated Current	额定功率 Rated Power	额定转速 Rated Speed	风量 Air Flow	风压 Air pressure	噪音 Noise Level	工作温度 Perm.Amb. Temp.	质量 Weight
Part NO.	VDC	VDC	A	W	RPM	M ³ /h	Pa	dBA	°C	Kg
HF280/50D2B2	24	16~28	8.4	201	2550	1930	740	74	-20~+60°C	2.5
HF280/50D4B2	48	36~56	4.2	201	2550	1930	740	74	-20~+60°C	2.5

外形尺寸 Outline

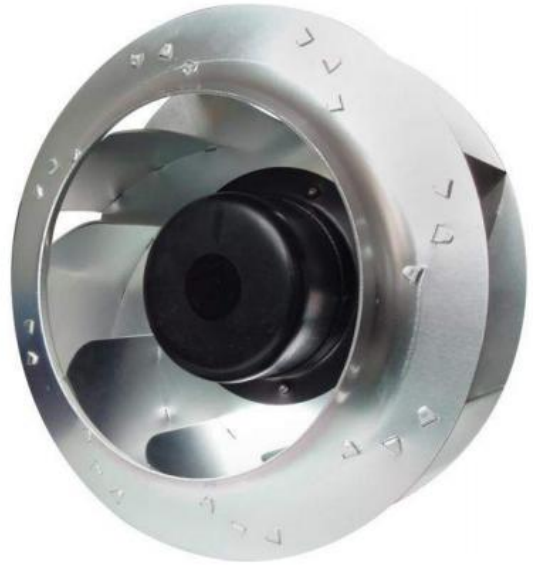
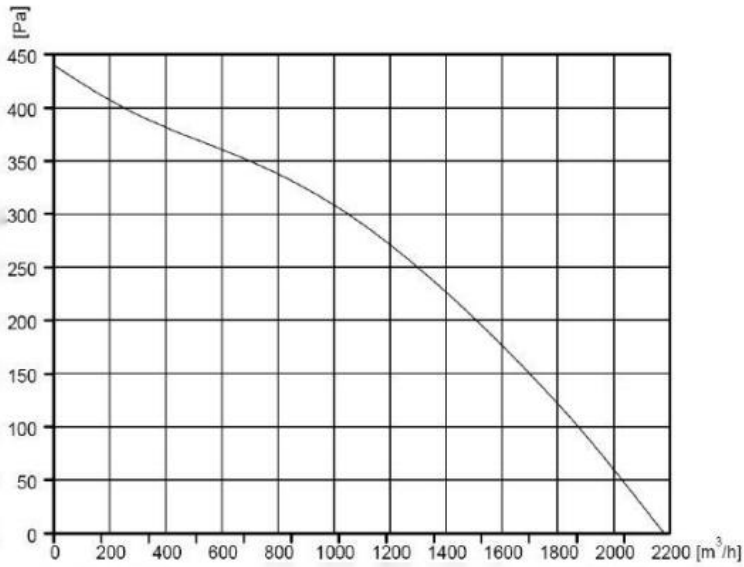


控制线 Control Cable

颜色 Color	功能 Function
红 Red	+10V Output
蓝 Blue	GND
黄 Yellow	0-10VDC/ PWM
白 White	FG

DC Centrifugal Fan $\phi 280$

风量曲线:

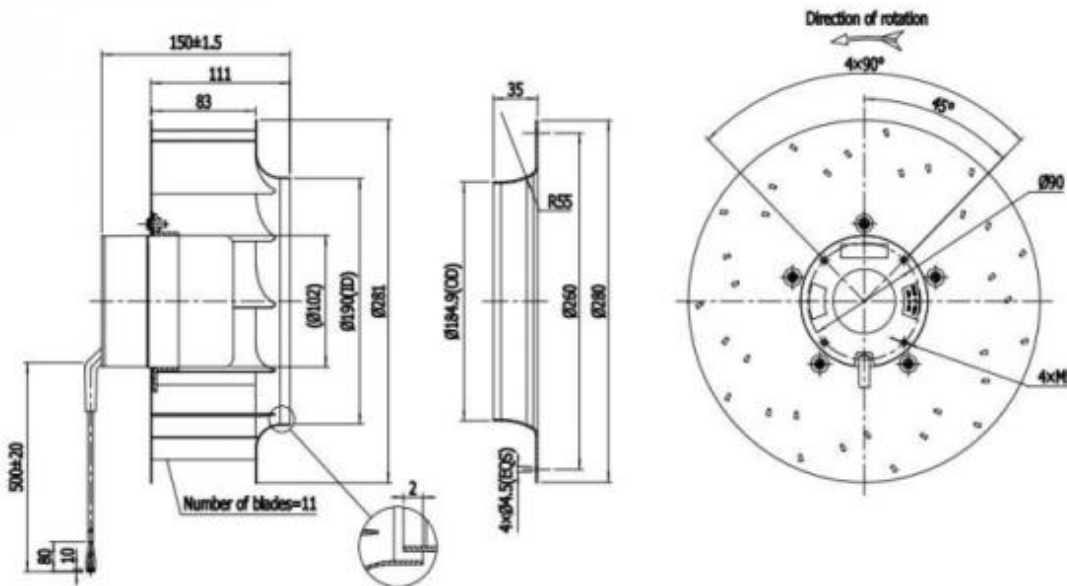


技术参数 Specifications

材质 :铝合金板 防护等级:IP44 绝缘等级:Calss:B

型号 Model	额定电压 Rated Voltage	工作电压 Operating Voltage	额定电流 Rated Current	额定功率 Rated Power	额定转速 Rated Speed	风量 Air Flow	风压 Air pressure	噪音 Noise Level	工作温度 Perm.Amb. Temp.	质量 Weight
Part NO.	VDC	VDC	A	W	RPM	M ³ /h	Pa	dBA	°C	Kg
HF280/80D2C1	24	16~28	8.0	192	2170	2150	435	70	-20~+60°C	3.3
HF280/80D4C1	48	36~56	4.0	192	2170	2150	435	70	-20~+60°C	3.3

外形尺寸 Outline

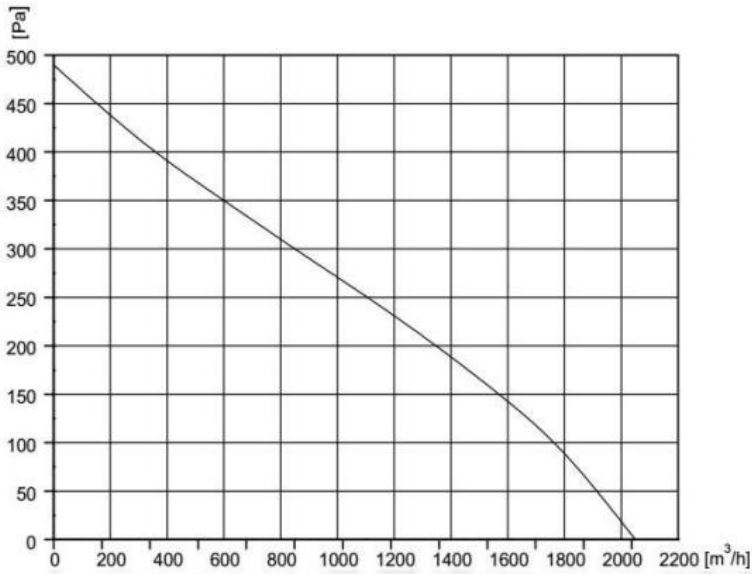


控制线 Control Cable

颜色 Color	功能 Function
红 Red	+10V Output
蓝 Blue	GND
黄 Yellow	0-10VDC/ PWM
白 White	FG

DC Centrifugal Fan $\phi 310$

风量曲线:

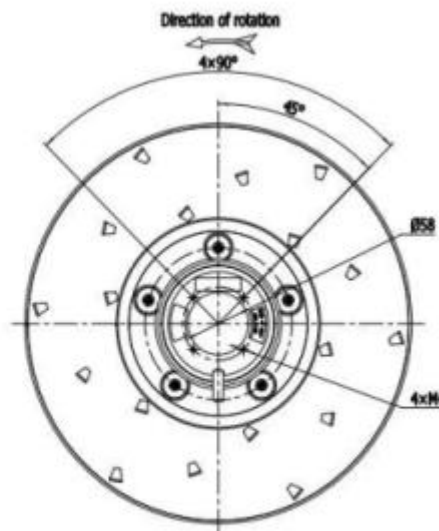
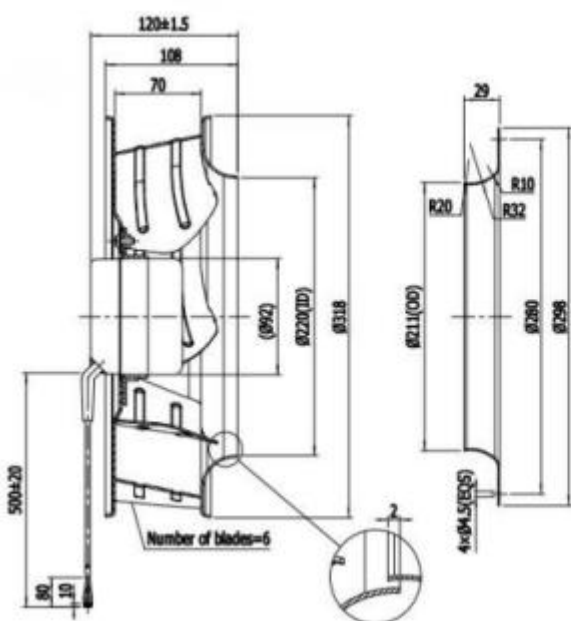


技术参数 Specifications

材质:铝合金板 防护等级:IP44 绝缘等级:Class:B

型号 Model	额定电压 Rated Voltage	工作电压 Operating Voltage	额定电流 Rated Current	额定功率 Rated Power	额定转速 Rated Speed	风量 Air Flow	风压 Air pressure	噪音 Noise Level	工作温度 Perm.Amb. Temp.	质量 Weight
Part NO.	VDC	VDC	A	W	RPM	M ³ /h	Pa	dBA	°C	Kg
HF310/70D2B2	24	16~28	6.2	149	1750	2050	490	67	-20~+60°C	2.6
HF310/70D4B2	48	36~56	3.1	149	1750	2050	490	67	-20~+60°C	2.6

外形尺寸 Outline

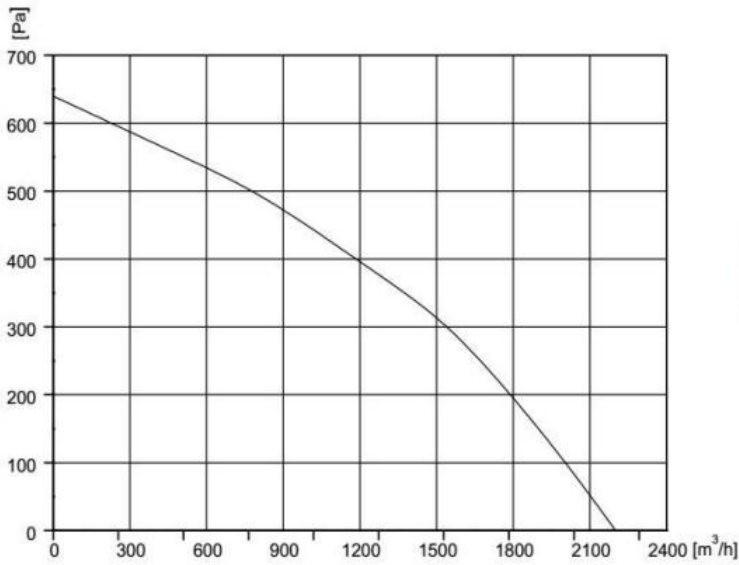


控制线 Control Cable

颜色 Color	功能 Function
红 Red	+10V Output
蓝 Blue	GND
黄 Yellow	0-10VDC/ PWM
白 White	FG

DC Centrifugal Fan $\phi 310$

风量曲线:

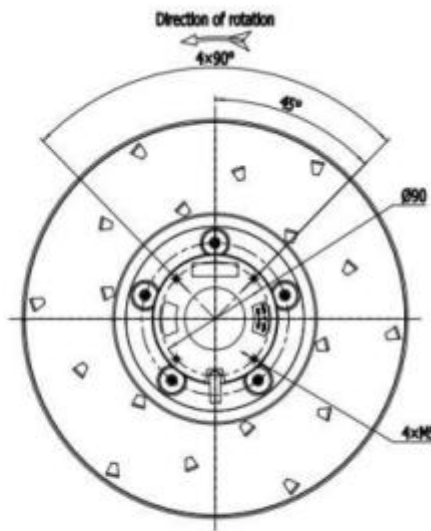
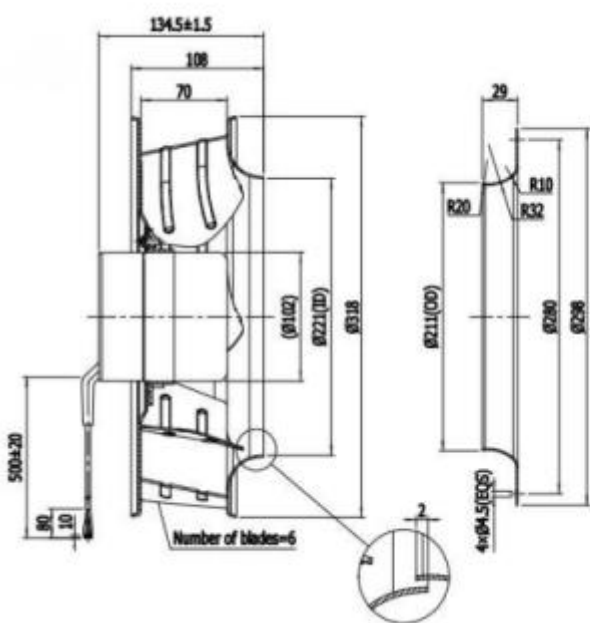


技术参数 Specifications

材质:铝合金板 防护等级:IP44 绝缘等级:Calss:B

型号 Model	额定电压 Rated Voltage	工作电压 Operating Voltage	额定电流 Rated Current	额定功率 Rated Power	额定转速 Rated Speed	风量 Air Flow	风压 Air pressure	噪音 Noise Level	工作温度 Perm.Amb. Temp.	质量 Weight
Part NO.	VDC	VDC	A	W	RPM	M³ /h	Pa	dBA	°C	Kg
HF310/70D2C1	24	16~28	8.4	202	2060	2200	640	71	-20~+60°C	4.2
HF310/70D4C1	48	36~56	4.2	202	2060	2200	640	71	-20~+60°C	4.2

外形尺寸 Outline

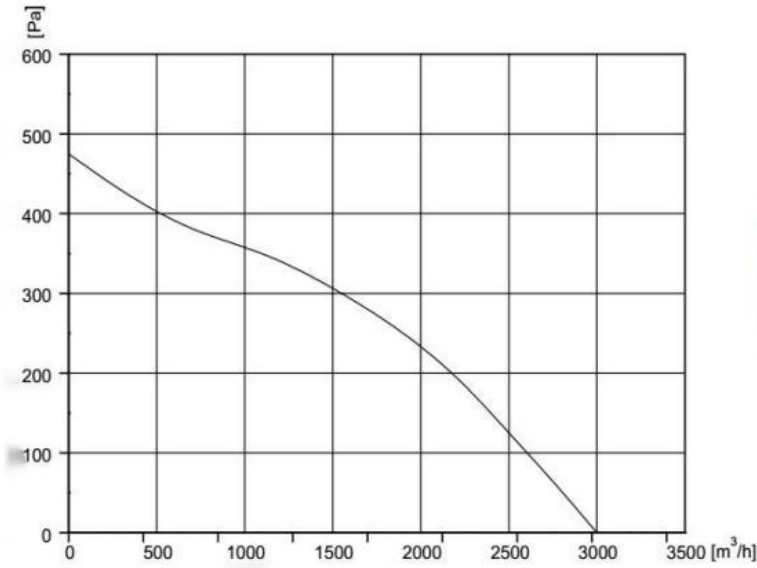


控制线 Control Cable

颜色 Color	功能 Function
红 Red	+10V Output
蓝 Blue	GND
黄 Yellow	0-10VDC/ PWM
白 White	FG

DC Centrifugal Fan $\phi 400$

风量曲线:

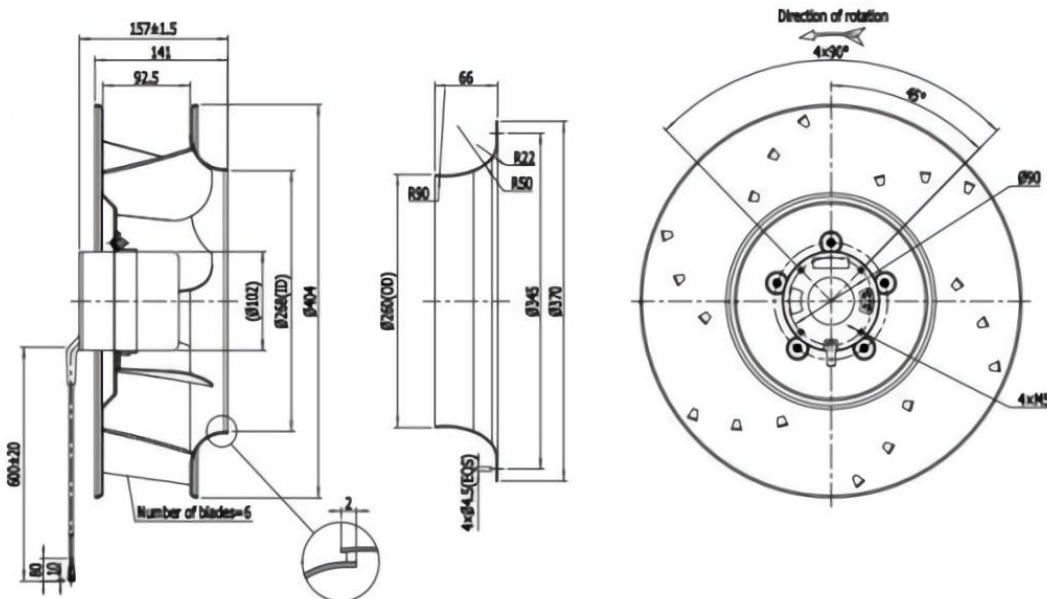


技术参数 Specifications

材质:铝合金板 防护等级:IP44 绝缘等级:Class:B

型号 Model	额定电压 Rated Voltage	工作电压 Operating Voltage	额定电流 Rated Current	额定功率 Rated Power	额定转速 Rated Speed	风量 Air Flow	风压 Air pressure	噪音 Noise Level	工作温度 Perm.Amb. Temp.	质量 Weight
Part NO.	VDC	VDC	A	W	RPM	M³/h	Pa	dBA	°C	Kg
HF400/93D2C2	24	16~28	9.5	228	1290	3000	473	65	-20~+60°C	4.9
HF400/93D4C2	48	36~56	4.75	228	1290	3000	173	65	-20~+60°C	4.9

外形尺寸 Outline



控制线 Control Cable

颜色 Color	功能 Function
红 Red	+10V Output
蓝 Blue	GND
黄 Yellow	0-10VDC/ PWM
白 White	FG